



For Inquiry Contact: 079 2656 8666, +91 99253 69720, 90999 27138

BRAINS Creative Unit™ - Surat



where  
the  
seasons  
meet

KP *Courtyard*

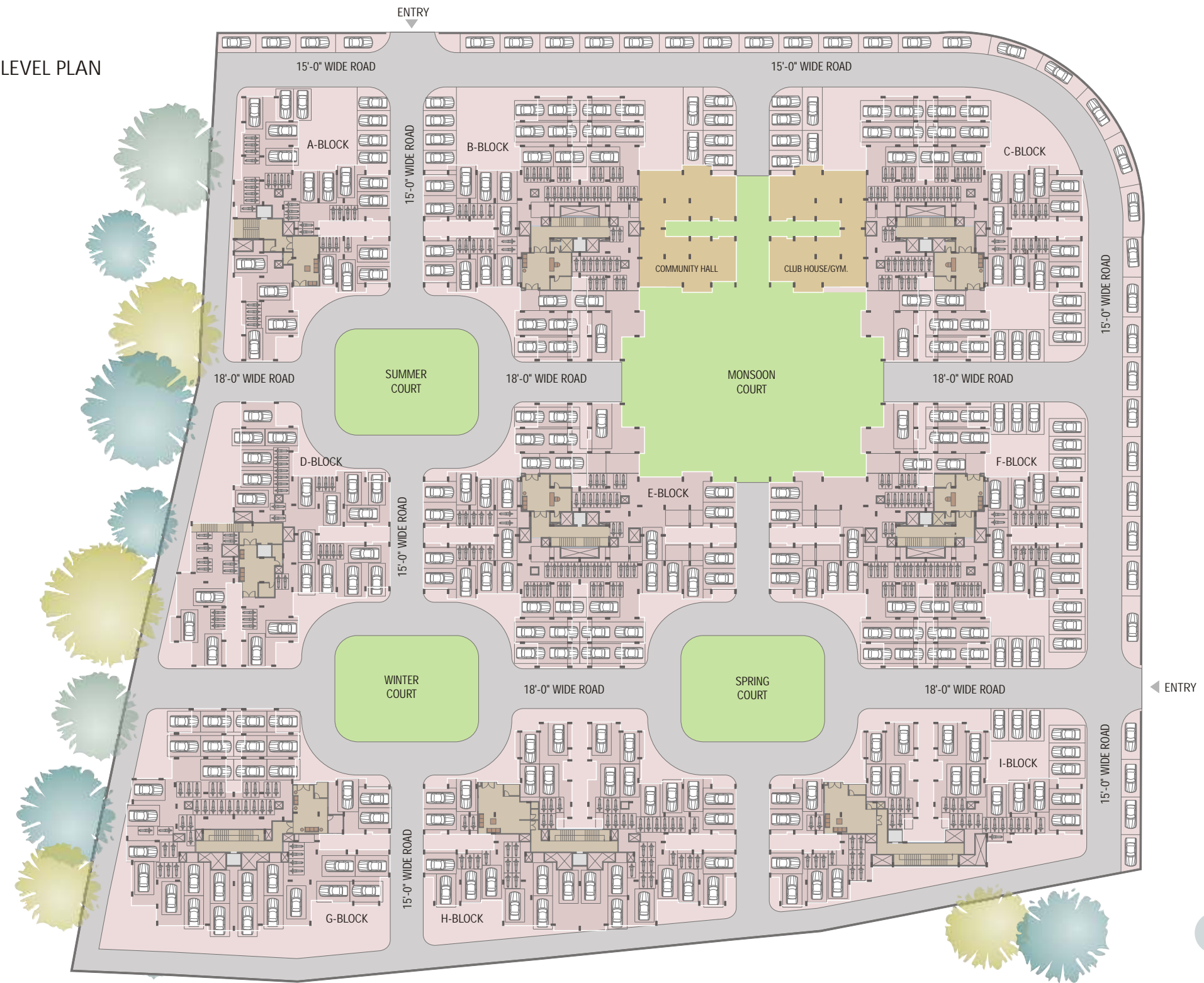




In the rapidly upcoming exclusive locality of Gokuldham on the Ahmedabad-Sanand Road, a supreme habitat is shaping up for the upwardly mobile citizens of Ahmedabad. These amazing hi-life apartments carry the trusted mark of the K. P. Sanghvi Group; thereby ensuring timely deliverance and superior material specifications and workmanship. The housing offers an unparalleled ambience with unique features like the sky-walk - a jogging track 40 feet above the ground and a 3-D Garden. Gone are the days of stereotyped housing blocks as this one is built around four beautifully and thematically landscaped courtyards and catering to the needs of inhabitants across the age barriers. Needless to say, the apartments are well planned, well ventilated and take care of your smaller yet important needs of life; making them very comfortable to live in.



PARKING LEVEL PLAN



*K P Courtyard*





Summer, Monsoon, Winter, Spring,... These are the four seasons that we have known to exist since ages. However, seldom have we got a chance to really experience them in their best form. K.P. Courtyards is conceptualised with an aim of offering the experience of these seasons in their highest form. The plus-shaped building blocks look into the four courtyards (over 800 square yards each) celebrating the four seasons, through blossoming landscape and exciting architecture.

summer



monsoon



winter



spring





# summer



The Summer Season stands for the heat that ripens the fruits and make you realise the importance of the trees. This Summer Courtyard is for the matured couples in the housing. The landscape is a bumpy one like the life that they have seen till date; and there is a pathway that cuts through the mounds paving a pathway that gives comfort of walking on a level. Extensive usage of wood in the landscape and the building architecture would lend immense richness to the ambience.

# monsoon



The Monsoon Season spreads greenery and romance all over. This Monsoon Courtyard is dedicated to the youngsters of the housing, who would love being in this unique conception of the 3D Garden; wherein the landscape takes over the buildings and also the air space. This would be an ideal and real hatke setting for arranging all your parties and functions. The well-equipped Gym and the Indoor Sports room would be connected to this courtyard.

# winter



The Winter Season stands for endurance and persistence; some thing that the senior citizens of the the habitat can easily relate to. The Winter Courtyard is designed precisely for them so that they can spend time over here meeting each other and talking about their journeys sitting under the Gazebo. The landscape and the architecture would be constructed with triangular facets representing the various facets of their life and the extensive usage of glass and steel would radiate heat for them in the winters and also make them feel that they belong to the present and are not outdated!

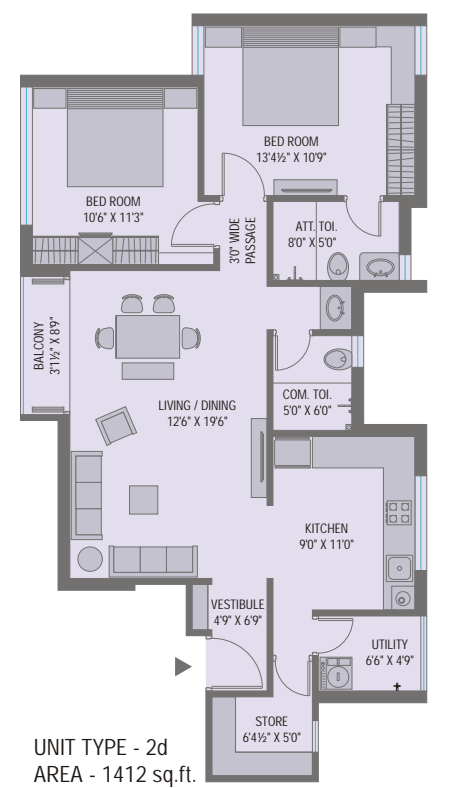
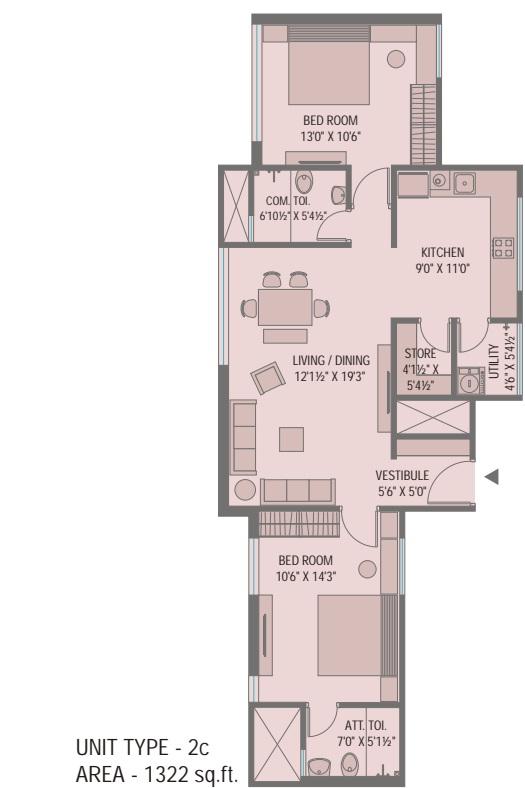
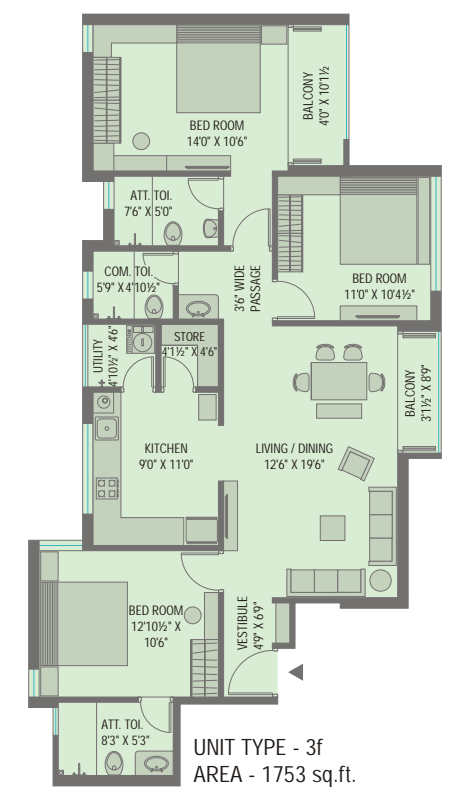
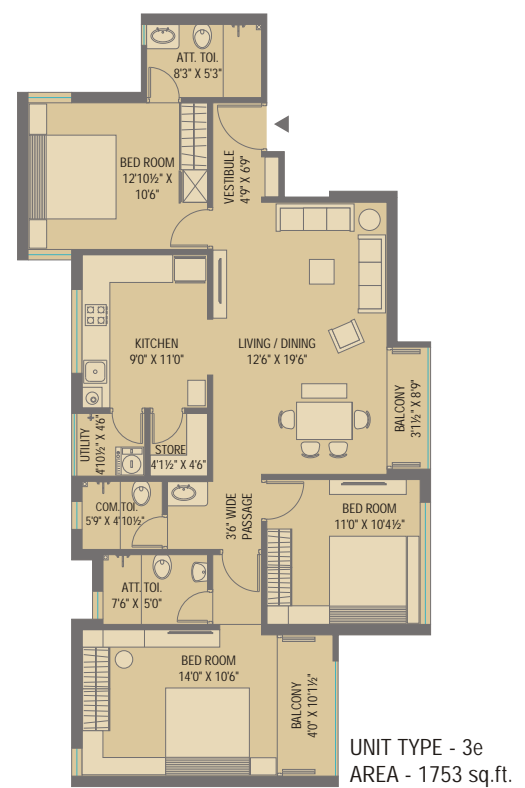
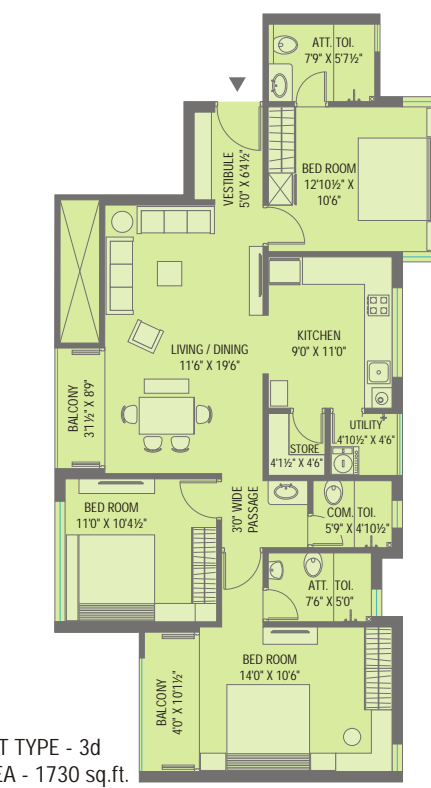
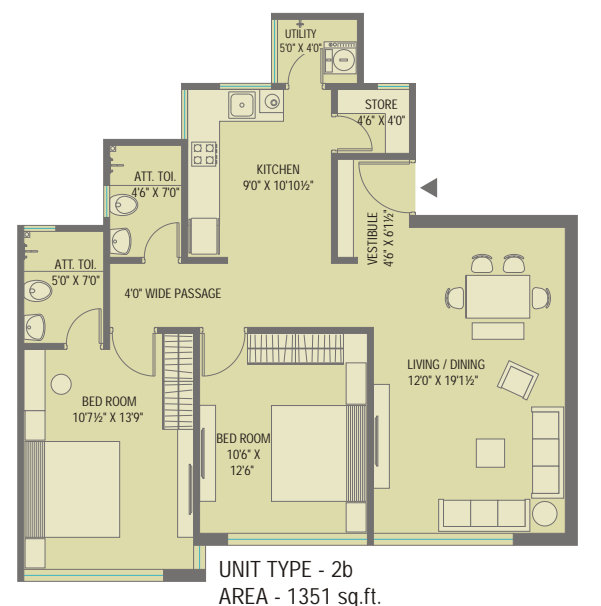
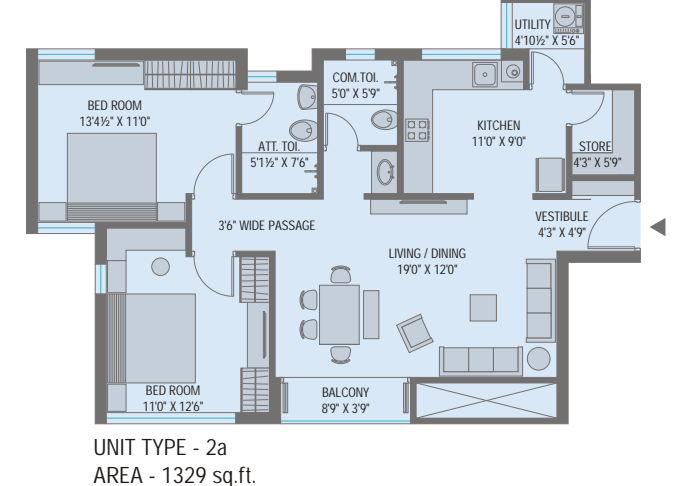
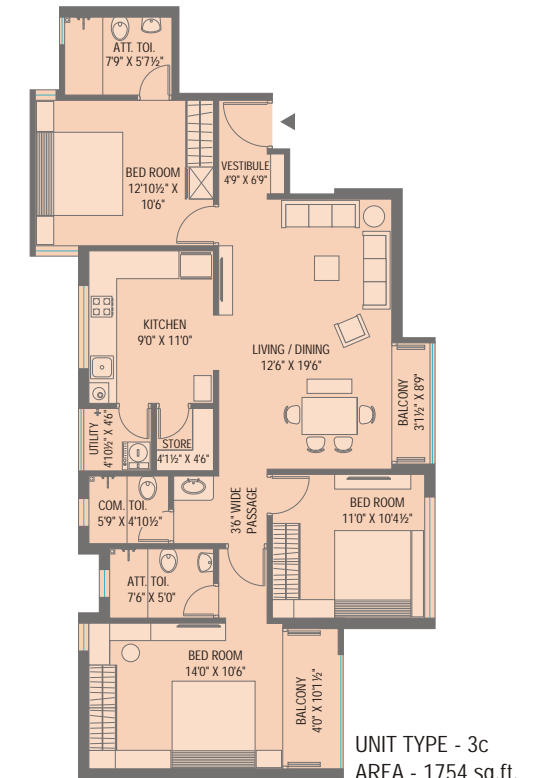
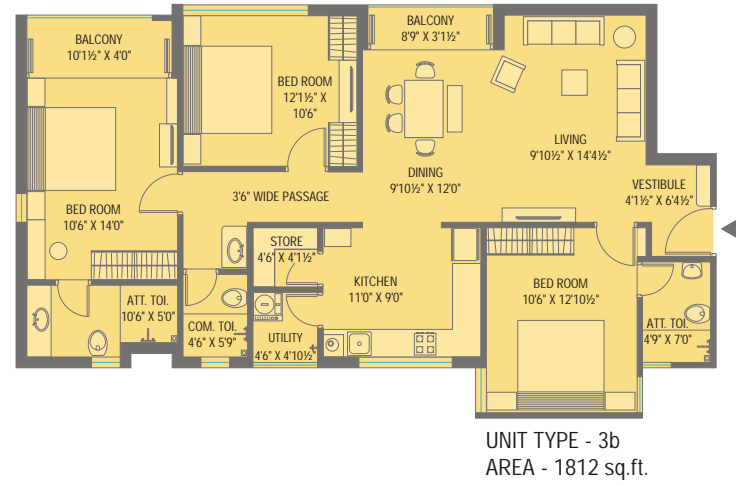
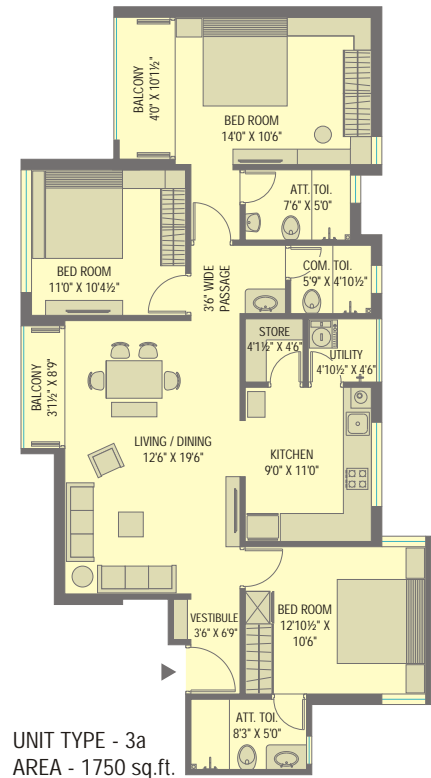
# spring



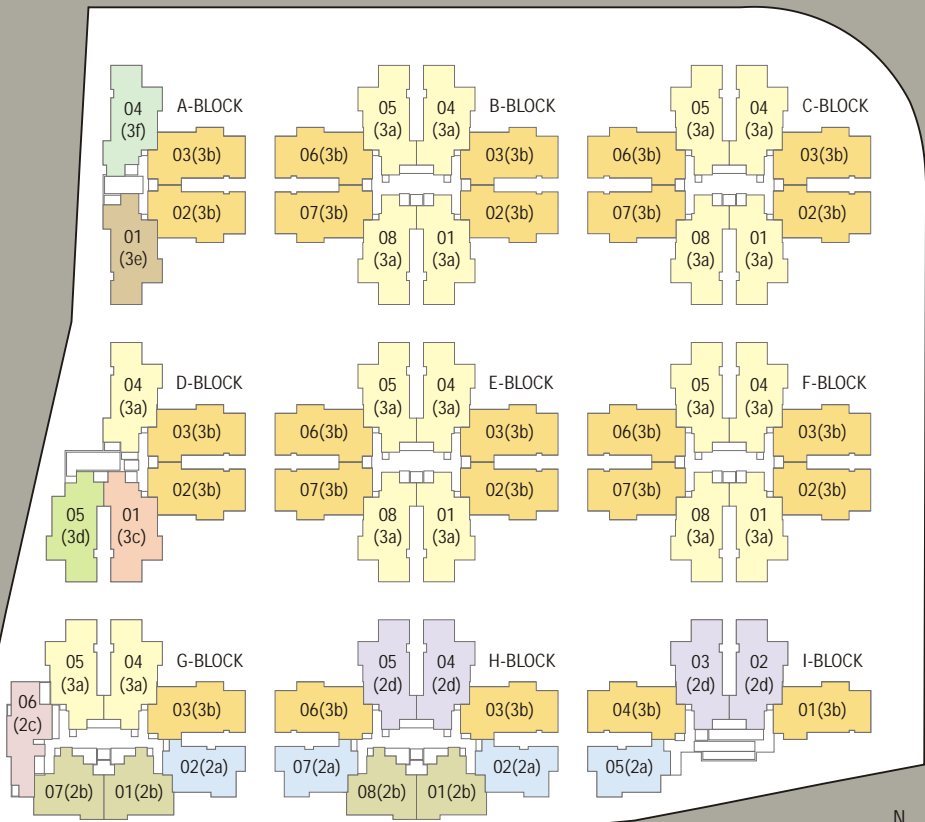
The Spring Season brings along fresh air, colourful flowers and a good mood all around. This Spring Courtyard is dedicated to the kids of the housing, who just like Spring would make the place very cheerful and colourful. The landscape would have the flowering trees and shrubs which blossom in spring and the architecture of the blocks around would be created using vibrant tiles and stones. The main feature of this courtyard would be the splash pool and the play area with rubberised floor to take care of your young ones.







INDICATION PLANS







## A M E N I T I E S

- Houses built around four large courtyards facilitating activities of all age groups
- Hi-Strength Paver Block Roads
- Splash Pool and Well-equipped play area for children
- Gazebo for Senior Citizens
- Party lawns with unique 3D Garden Concept
- Well equipped Gymnasium
- Indoor Games Room
- Sky Walk - a unique concept for walking and jogging track at the terrace level encircling the four courtyards
- 24X7 Water Supply
- 10 Power generator backup for all the common amenities like street lights, elevators and lobby lights
- 1000 VA generator power backup to each apartment
- Very well ventilated apartments with good privacy levels
- Just three storey apartments to ensure openness; however elevators provided for each block for comfort
- All apartments connected through EPABX
- Parking of two cars for each apartment



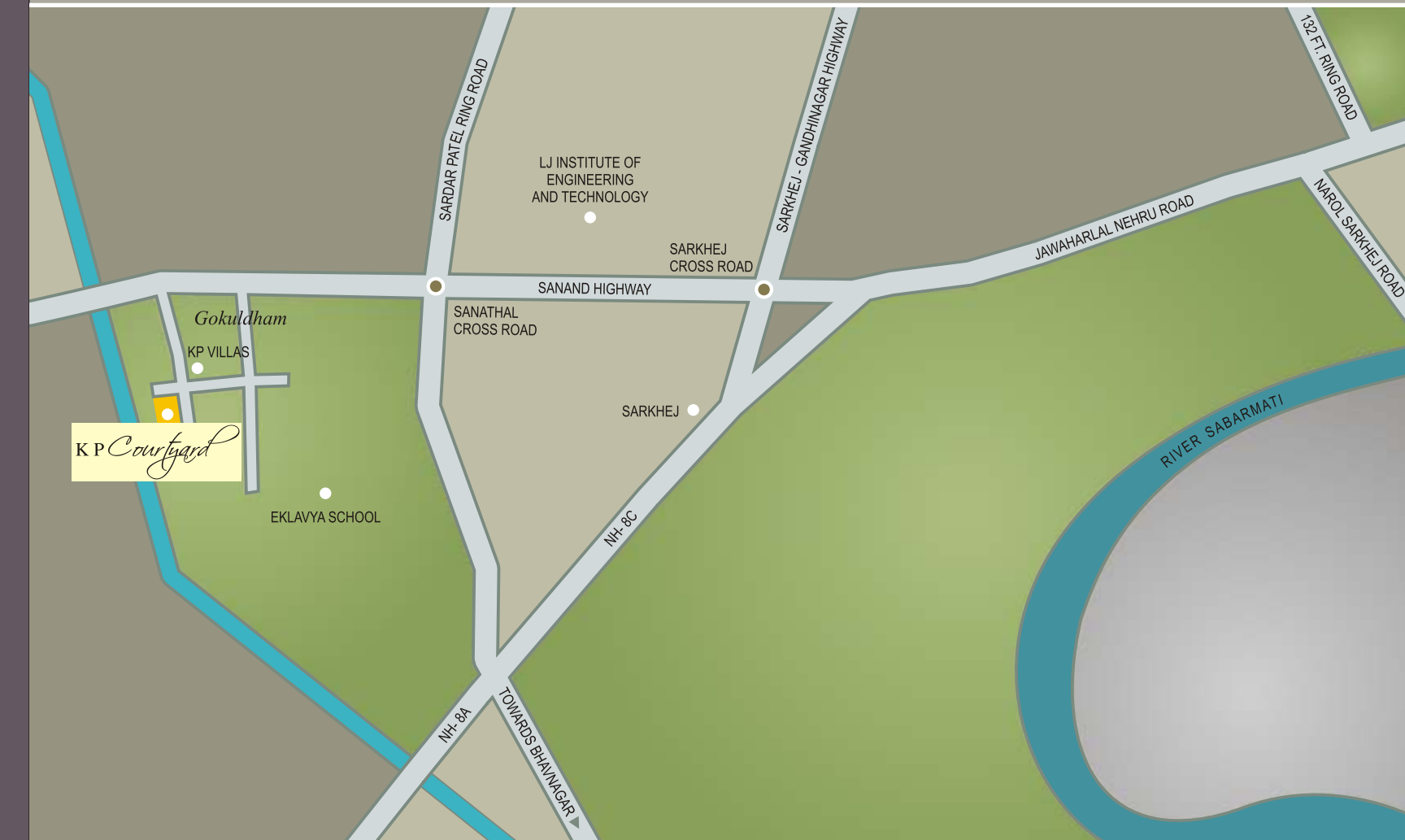
## SPECIFICATIONS

NO.	ITEM	MAKE
<b>A FLOORING</b>		
1	Good quality double-charged vitrified tiles in hall, dining, kitchen & bedroom	Asian, Nitco or Equivalent
2	Anti Scratch tiles in Utility with four feet wall dado of Ceramic or Glazed Tiles	Jhonson Endura or Equivalent
3	Glazed tiles dado up to lintel level with kota stone shelves in Store Room	Jhonson or Equivalent
<b>B DOORS &amp; WINDOWS</b>		
1	Teak wood Main door in Granite Frame	Flush doors of Century, Green, Anchor or equivalent
2	Laminate finished flush door for room and bathroom doors in Granite Frame	Flush doors of Century, Green, Anchor or equivalent
3	Secured windows in aluminum section with low heat emission glass, fully glazed and with Granite frame on all 4 sides	Aluminium sections of Jindal, Hindalco or equivalent
<b>C KITCHEN</b>		
1	Granite top kitchen platform with anti-scratch stainless steel sink & vitrified tiles dado	Sink of Nirali or equivalent
<b>D SAFETY FEATURES</b>		
1	Gas detector Standard Make	Standard Make
2	Video door phone in each flat	Jhonson Controls, Panasonic or equivalent
3	Security cabin with intercom connection to each flat Matrix or Equivalent	Matrix or Equivalent
<b>E WALLS</b>		
1	All internal wall finished with basic putty over mala plaster	Birla White Putty or Equivalent
2	All external wall with double coat plaster & finished with a combination of textured paint and stonecrete plaster	Paint of Asian Paints, Weathershield or Equivalent

NO.	ITEM	MAKE
<b>F ELECTRIFICATION AND AIR-CONDITIONING</b>		
1	Sufficient points with concealed copper wiring along with modular switches of standard make	ISI marked wires only and modular switches of Legrand, Anchor or Equivalent
2	E.L.C.B & M.C.B for total safety and protection	ISI certified and of Havells, Siemens or Equivalent
3	Domestic points for fridge, washing machine, AC & hot water geysers	Switches of Legrand, Anchor or Equivalent
4	Concealed T.V, telephone & internet point in living room and bedroom	ISI marked cables and wires only
5	Generator for elevator, water pump & general lighting	Elevators of Trio or Equivalent, Water Pumps of Grundfos, Kirlosker or Equivalent
6	Invertor ready wiring in each flat	ISI marked cables and wires only
7	Hi-wall split AC installed in 2 Bedrooms and Living and Dining Room	Samsung, LG, Panasonic or Equivalent make
<b>G BATHROOM / TOILETS</b>		
1	Decorative tiles dado up to lintel level & flooring with modern concept tiles	Asian, Nitco or Equivalent
2	Bath fittings/faucets of standard make with ceramic cartridge & quarter turn series	Parryware, Grohe, Jaquar or Equivalent
3	European WC & Wash Basin of standard make in all bathroom	Parryware, Duravit or Equivalent
4	Plumbing with UPVC-CPVC or composite pipes	Astral CPVC, Supreme UPVC or Equivalent

### Special Note:

Developers reserve the right to make necessary changes in the above mentioned specifications without any prior notice & these would be binding to all the members. All the dimensions given are approximate and unfinished. This brochure is just a representation of the final product of the project and cannot be treated as a legal document.



ARCHITECT:



**S.TEAM DESIGN SERVICES**

Ph.: +91 261 259 9127 / +91 99090 16610

Email: s\_team2001@yahoo.com